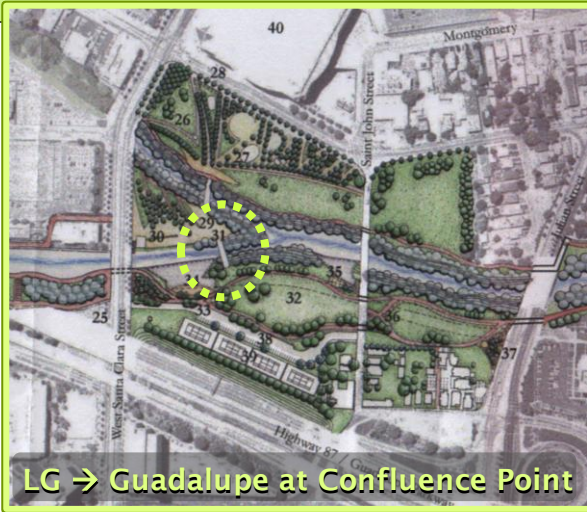
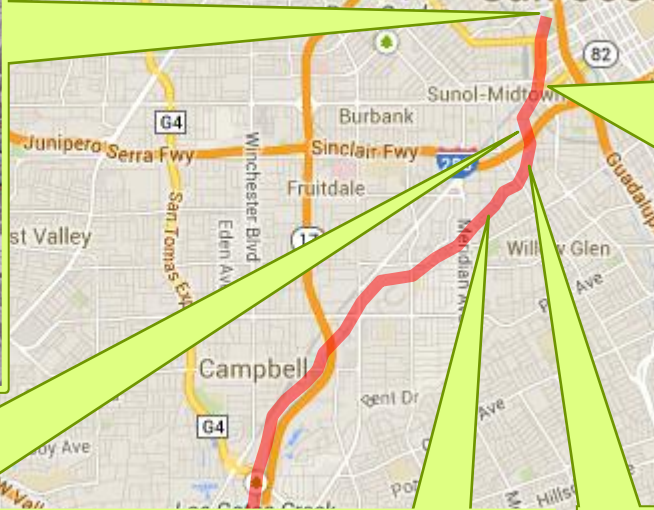


Los Gatos Crk Trail Update

Larry Ames, Aug. 2014



LG → Guadalupe at Confluence Point



free LGC from culvert at Park



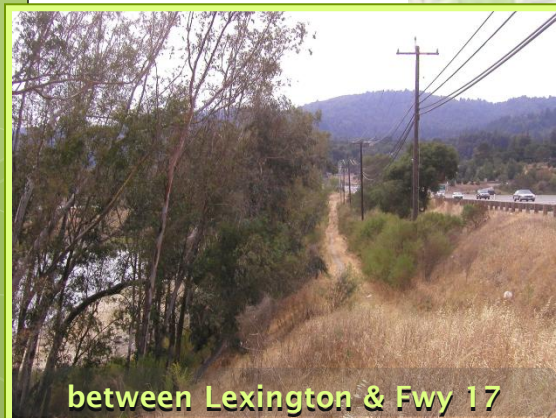
CalTrain at San Carlos



Meridian → Lincoln



WG Trestle & 3 Crks Trail



between Lexington & Fwy 17



extend past Lake Elsmar to the summit

the Willow Glen Trestle

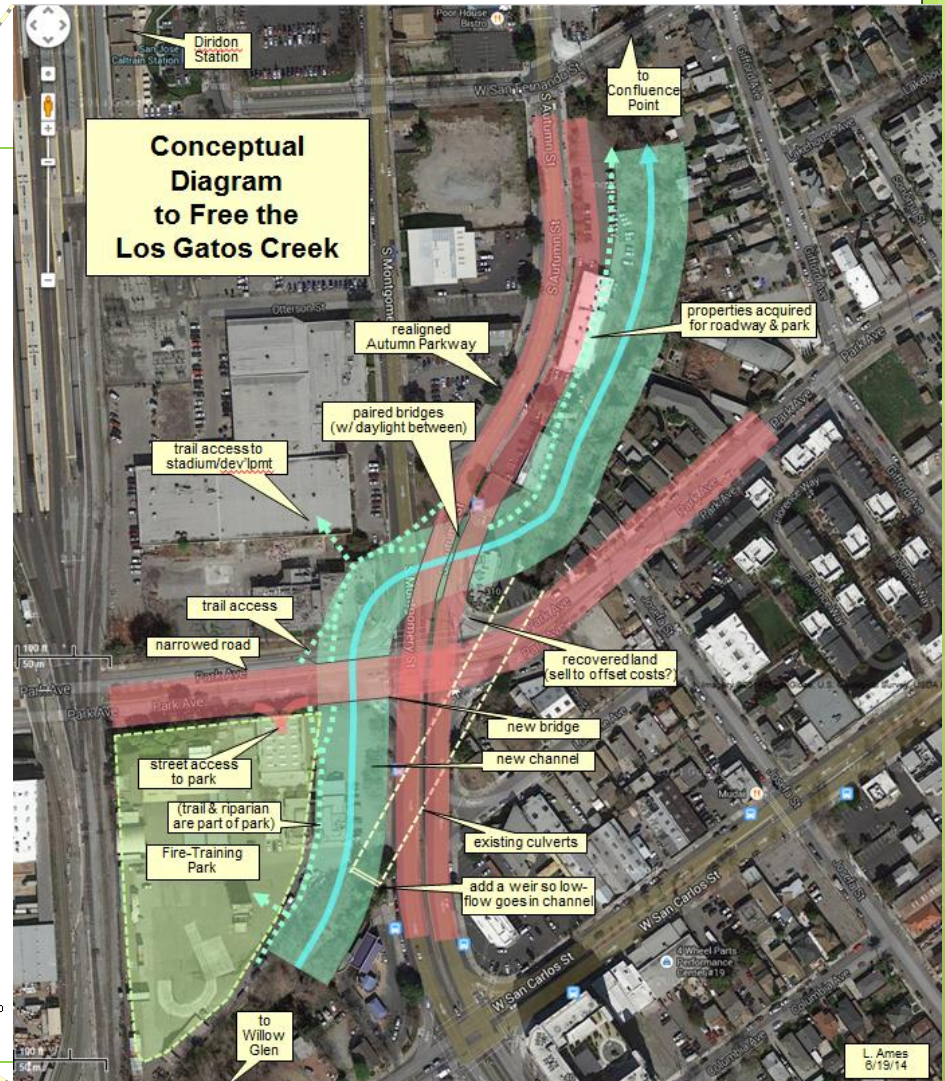
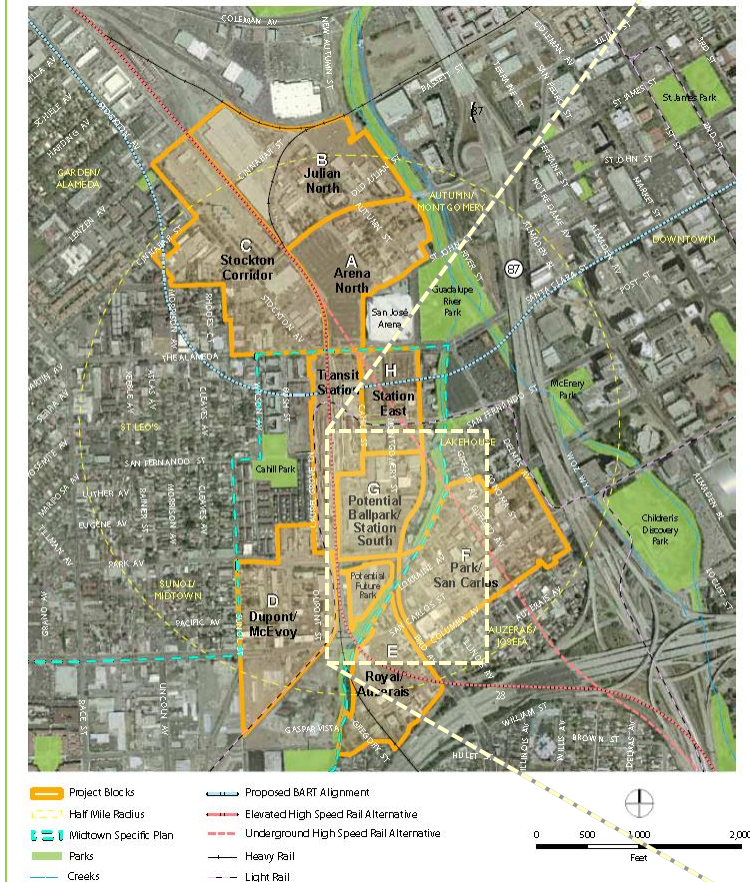
- Court ruled in favor of Friends of the WG Trestle
- City has to withdraw contract for demolition; do a full EIR
- Court ruling and Press Release on-line at www.WGTrestle.org



Diridon Station Area Plan -- Free the LG Creek!

● jog to the left

FIGURE 1-2-1: DIRIDON STATION AREA IN CONTEXT



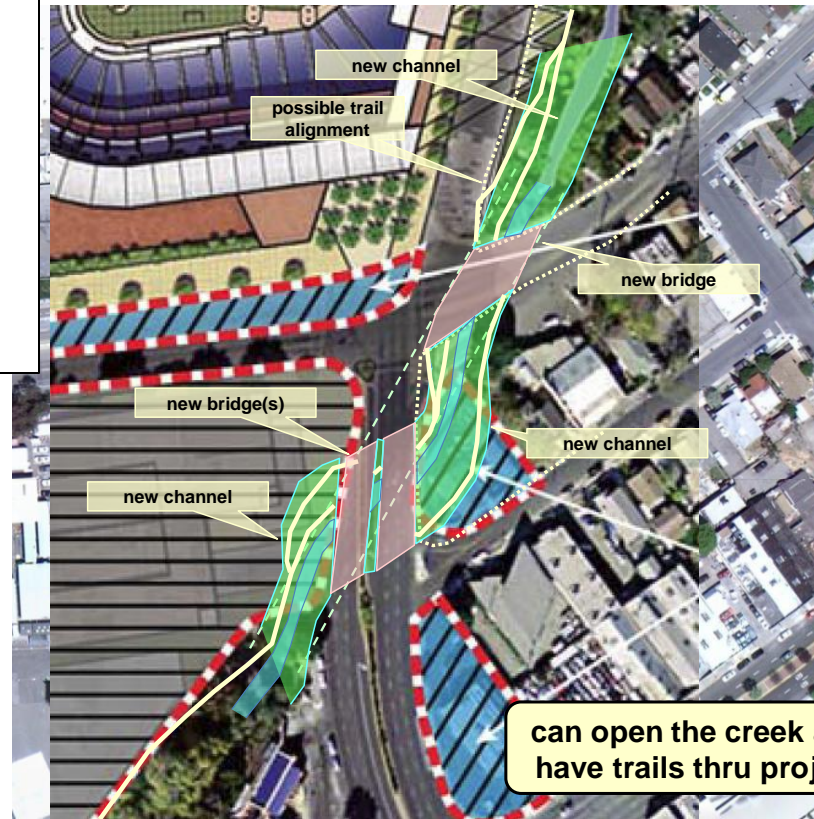
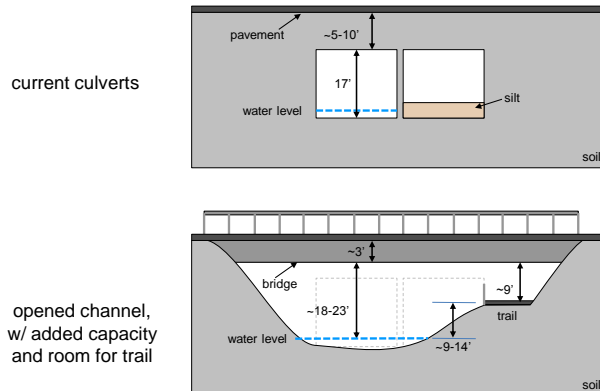
alternative alignment

Stadium Plans



● jog to the right

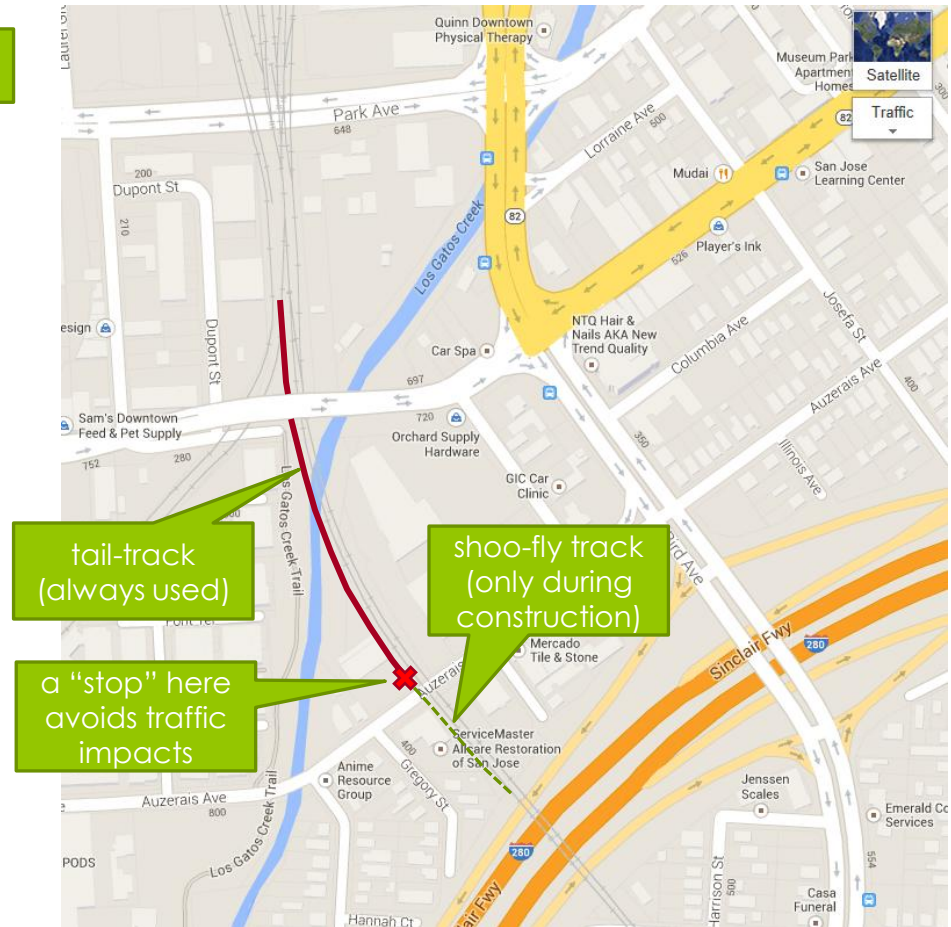
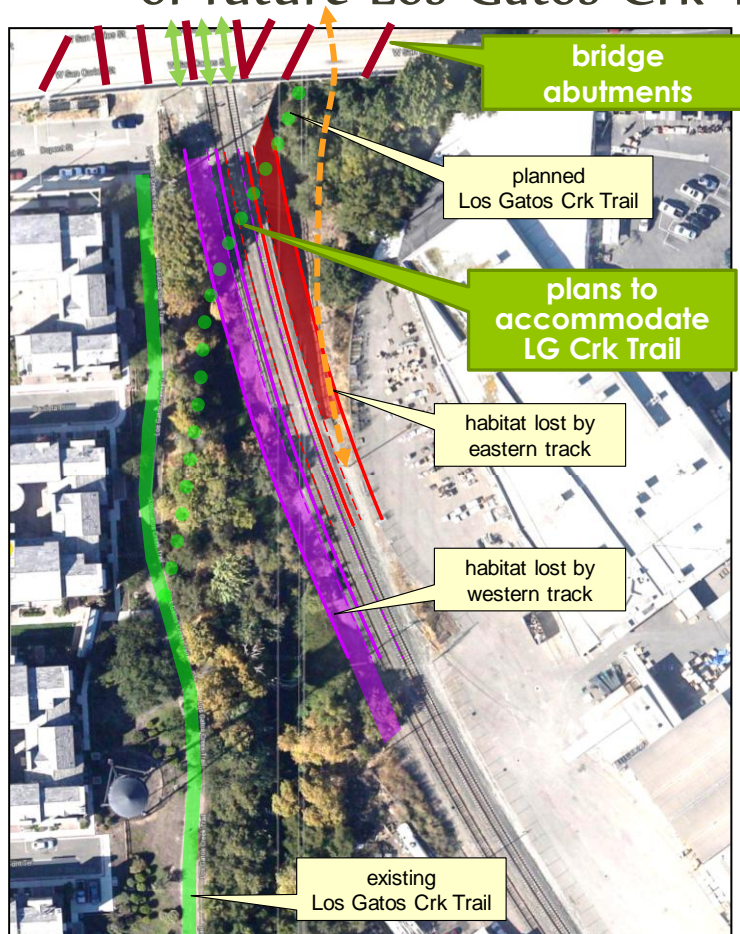
Elevation Cross-sections



L. Ames,
6/24/11

CalTrain Los Gatos Creek Bridge

- coordinate w/ City of SJ & CalTrain to assure accommodation of future Los Gatos Crk Trail.





trail follows PG&E easement

reconfigure traffic signal to include Pedro

alt. alignment: shorter, but more turns...

on-street alignment (quiet streets)

ramp to Meridian? (part of Master Plan)

undercrossing of Meridian (as per LG Crk Trl Master Plan)

LG Crk Trail

trail out-of-sight (below bank)

need easement for access to cul-de-sac. (is not near homes.)

Alt. 1: bridge at Cherry (would be nice!, could be controversial)

Alt. 2: bridge at Fruitdale (would need cantilevered causeway along side apts.)

Glen Eyrie is narrow and busy...

3 Crks Trail!

L. Ames
1/15/13